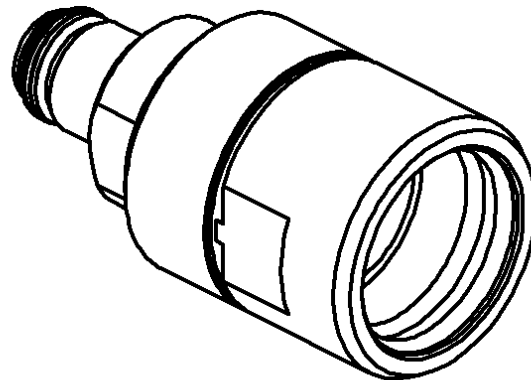
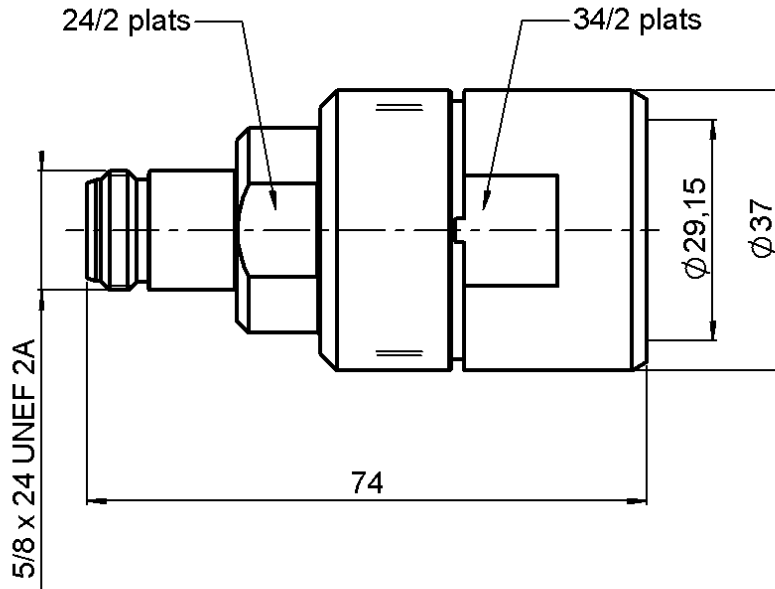


STRAIGHT JACK EZ FIT TYPE

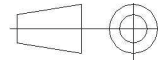
7/8" CORRUGATED CABLE

R161.231.020

Series : N



All dimensions are in mm.



COMPONENTS	MATERIALS	PLATINGS (µm)
BODY	BRASS	BBR 0.5 OVER SILVER 3
CENTER CONTACT	BERYLLIUM COPPER, BRASS	SILVER 5 PASSIVATED OVER COPPER 0.5
OUTER CONTACT	BRASS	BBR 0.5 OVER SILVER 3
INSULATOR	PTFE	
GASKET	SILICONE RUBBER	
OTHERS PARTS	BRASS	BBR 0.5 OVER SILVER 3
-	-	-
-	-	-

Issue : 0413 A

In the effort to improve our products, we reserve the right to make changes judged to be necessary.



RADIALL®

STRAIGHT JACK EZ FIT TYPE
7/8" CORRUGATED CABLE

R161.231.020

Series : N

PACKAGING

Standard	Unit	Other
1	-	Contact us

SPECIFICATION

ELECTRICAL CHARACTERISTICS

Impedance		50	Ω
Frequency		0-11	GHz
VSWR	1.25** +	0.000	x F(GHz) Maxi
Insertion loss		0.048	\sqrt{F} (GHz) dB Maxi
RF leakage	- (NA	- F(GHz)) dB Maxi
Voltage rating		1400	Veff Maxi
Dielectric withstanding voltage		2500	Veff mini
Insulation resistance		5000	M Ω mini

CABLE ASSEMBLY

Stripping	a	b	c	d	e	f
mm	26.0	0.00	0.00	0.00	0.00	0.00

Assembly instruction :

Recommended cable(s)
LDF5-50A-7/8"
M 1474 Z
LCF 7/8" Cu2Y

Cable retention

- pull off	500	N mini
- torque	NA	N.cm

MECHANICAL CHARACTERISTICS

Center contact retention		
Axial force – Mating end	68	N mini
Axial force – Opposite end	68	N mini
Torque	NA	N.cm mini

TOOLING

Part Number	Description
R282.011.060	STRIPPING TOOL FOR 7/8 CORRUGATED

Recommended torque		
Mating		N.cm
Panel nut		N.cm
Clamp nut	2500	N.cm
A/F clamp nut	33.900	mm

OTHERS CHARACTERISTICS

*IMP3= -112dBm à 1.8GHz (2x20W)
**ROS : 1.06 max <2.5GHz
Watertightness : IP68

Mating life	500	Cycles mini
Weight	111.350	g

ENVIRONMENTAL

Operating temperature	-55/+155	$^{\circ}$ C
Hermetic seal	NA	Atm.cm3/s
Panel leakage	NA	

Issue : 0413 A

In the effort to improve our products, we reserve the right to make changes judged to be necessary.

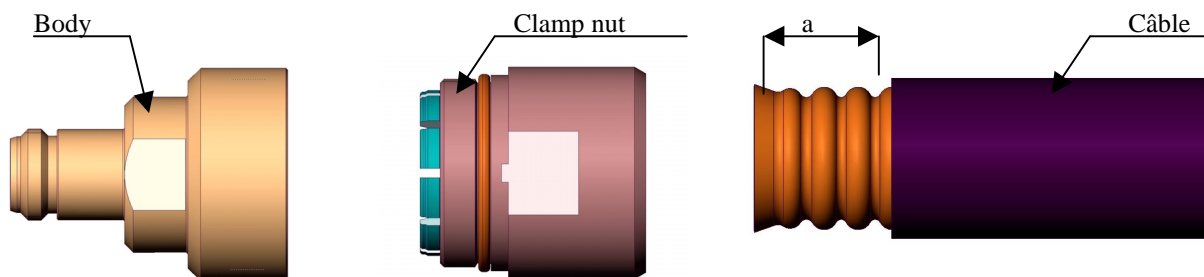


STRAIGHT JACK EZ FIT TYPE

7/8" CORRUGATED CABLE

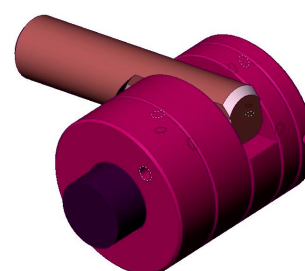
R161.231.020

Series : N



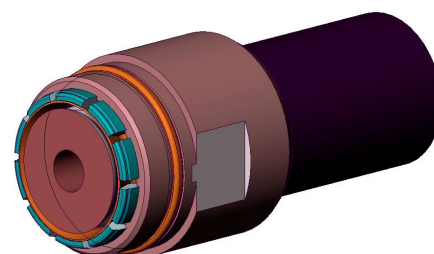
1) STRIPPING OF THE SHEATH

Cut the front extremity of the cable on the summit of a ring with a hacksaw (a dimension).
 Raise the handle and push the cable stops until it.
 Lowered the handle using a light pressure on it.
 Hold the handle down, and turn the tool (of approximately ¼ of tour) in the opposite direction, while pulling gently on the cable in order to release pieces of the cable cut.
 Raise the handle, slide the cable out and remove loose pieces of cable.
 To split the sheath with a tool cutting perpendicularly to the previously undertaken split.
 To remove the sheath cut.



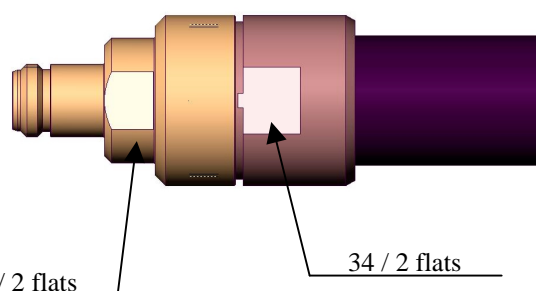
2) CABLE MOUNTING

Slide the clamp device over the cable, until the elastic part snap into the first groove of the outer conductor.
 Push forward the nut of the clamp device until it stops against the elastic part.



3) MOUNTING CABLE

Screw the connector on the nut of the clamp device.
 Recommended mating torque : 2500N.cm



Issue : 0413 A

In the effort to improve our products, we reserve the right to make changes judged to be necessary.

